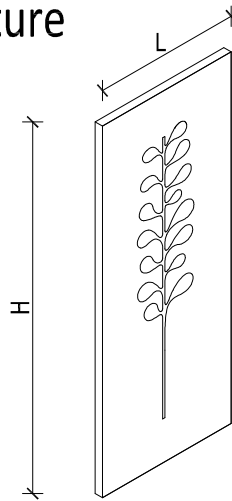
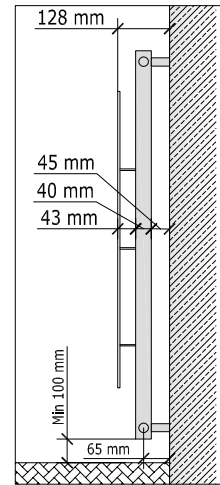




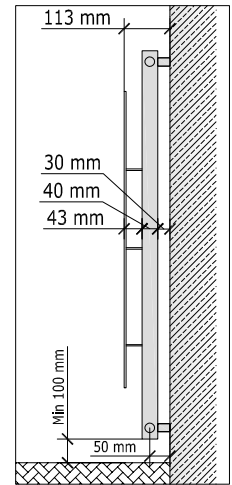
Nature



STANDARD BRACKET SIZE 45mm



OPTIONAL BRACKET SIZE 30mm

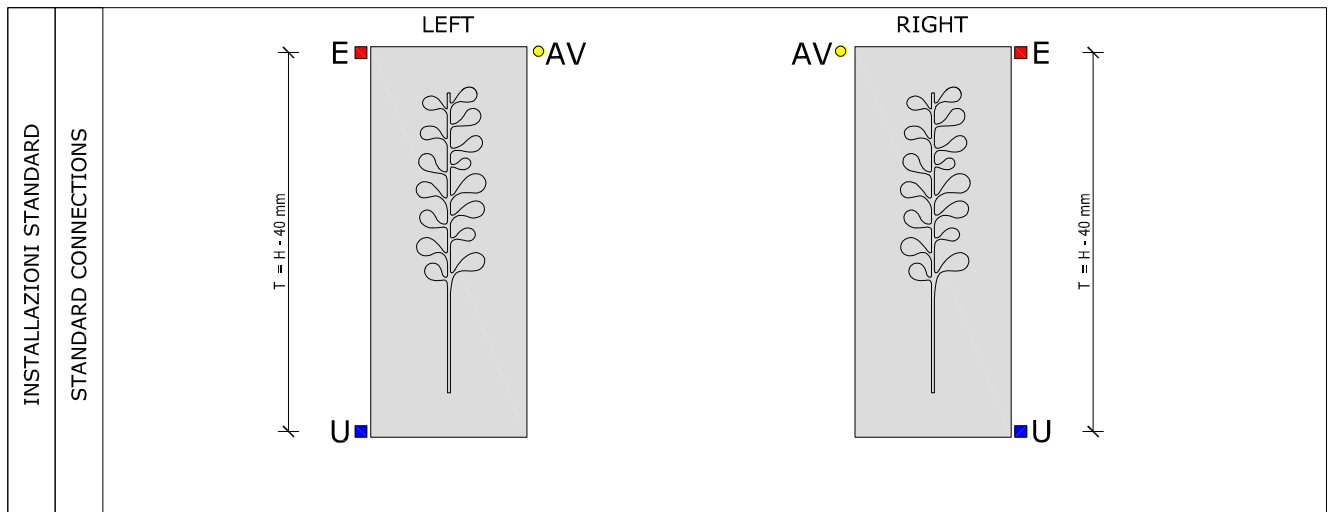


Radiator for "Camelia" and "Salice"				
Height [mm]	Width [mm]	Water contents [Lt]	Heating output $\Delta T 30^\circ C$ [W]	Heating output $\Delta T 50^\circ C$ [W]
2.200	480	3,9	892	1.749
	640	5,2	1.189	2.332
2.000	480	3,6	811	1.590
	640	4,8	1.081	2.120
1.800	320	2,2	488	957
	480	3,3	733	1.437
	640	4,4	978	1.917
1.600	320	2,0	436	854
	480	3,0	655	1.284
	640	4,0	874	1.714
1.400	320	1,8	383	751
	480	2,7	577	1.131
	640	3,6	771	1.511
1.200	320	1,6	330	648
	480	2,4	499	978
	640	3,2	667	1.308

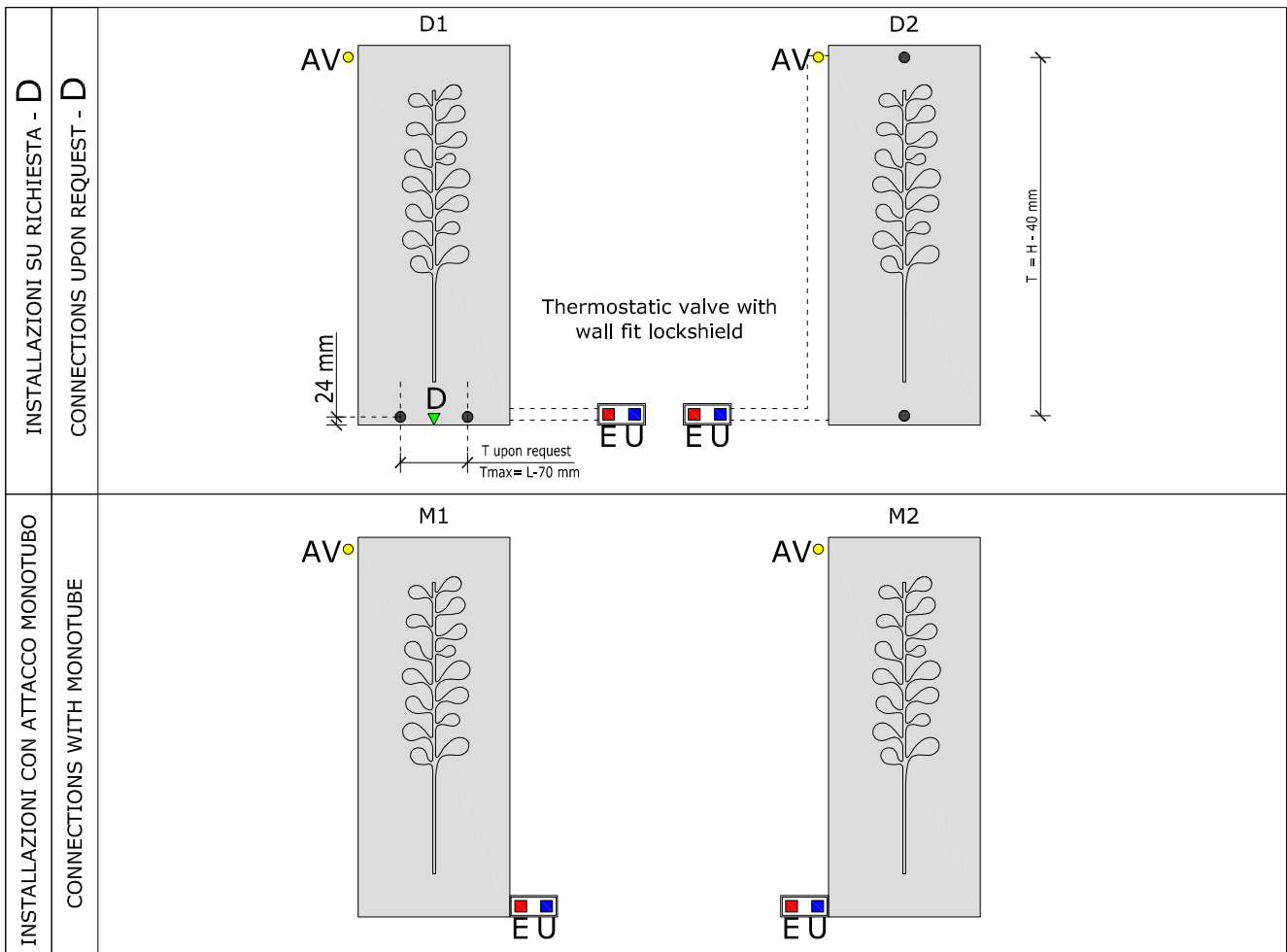
Radiator for "Ribes"					Total width with "Ribes" accessory
Height [mm]	Width [mm]	Water contents [Lt]	Heating output $\Delta T 30^\circ C$ [W]	Heating output $\Delta T 50^\circ C$ [W]	
2.200	400	3,3	744	1.458	452
	480	3,9	892	1.749	533
	560	4,6	1.040	2.040	560
2.000	400	3,0	676	1.325	452
	480	3,6	811	1.590	533
	560	4,2	946	1.855	560
1.800	400	2,8	610	1.197	452
	480	3,3	733	1.437	533
	560	3,9	855	1.677	560
1.600	400	2,5	545	1.069	452
	480	3,0	655	1.284	533
	560	3,5	764	1.499	560
1.400	400	2,2	480	941	452
	480	2,7	577	1.131	533
	560	3,1	674	1.321	560
1.200	400	2,0	415	813	452
	480	2,4	499	978	533
	560	2,8	583	1.143	560

AVAILABLE CONNECTIONS

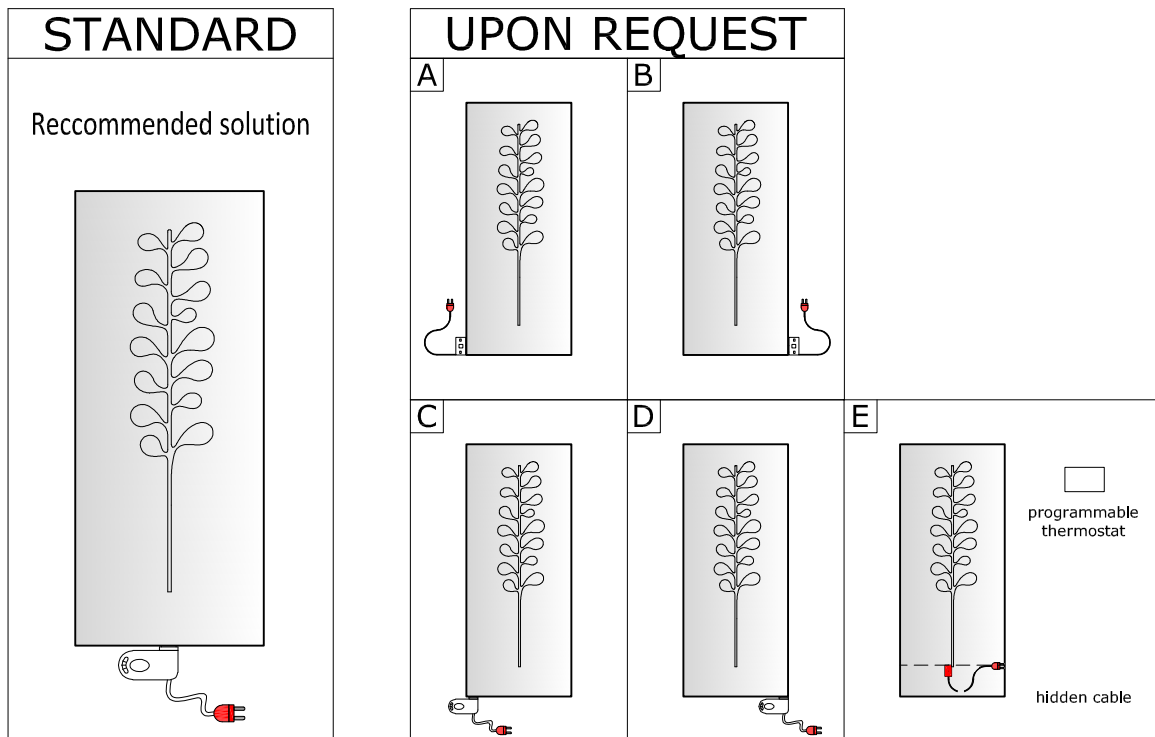
- E = entrata / in
- U = uscita / out
- ▲ D = diaframma / Diaphragm
- I = interasse / interspace
- AV = Sfiato / air vent



<p>INSTALLAZIONI SU RICHIESTA - A CONNECTIONS UPON REQUEST - A</p>	<p>A1: AV at top, D at bottom, T = W + 90mm.</p> <p>A2: AV at top, D at bottom, T = W + 90mm.</p> <p>A3: D at top, AV at bottom, T = W + 90mm.</p> <p>A4: D at top, AV at bottom, T = W + 90mm.</p>
<p>INSTALLAZIONI SU RICHIESTA - B CONNECTIONS UPON REQUEST - B</p>	<p>B1: AV at top, D at bottom, T upon request, Tmax = W - 70 mm.</p> <p>B2: AV at top, D at bottom, T upon request, Tmax = W - 70 mm.</p> <p>B3: D at top, AV at bottom, T upon request, Tmax = W - 70 mm.</p> <p>B4: D at top, AV at bottom, T upon request, Tmax = W - 70 mm.</p> <p>B5: AV at top, D at bottom, T = 50mm.</p> <p>B6: AV at top, D at bottom, T = 50mm.</p>
<p>INSTALLAZIONI SU RICHIESTA - C CONNECTIONS UPON REQUEST - C</p>	<p>C1: AV at top right, D at bottom left, T = W + 90mm, T = H - 40 mm.</p> <p>C2: AV at top left, D at bottom right, T = W + 90mm, T = H - 40 mm.</p>



ELECTRIC CONFIGURATIONS



Electric raditors need a programmable thermostat
according to "EcoDesign" european directive

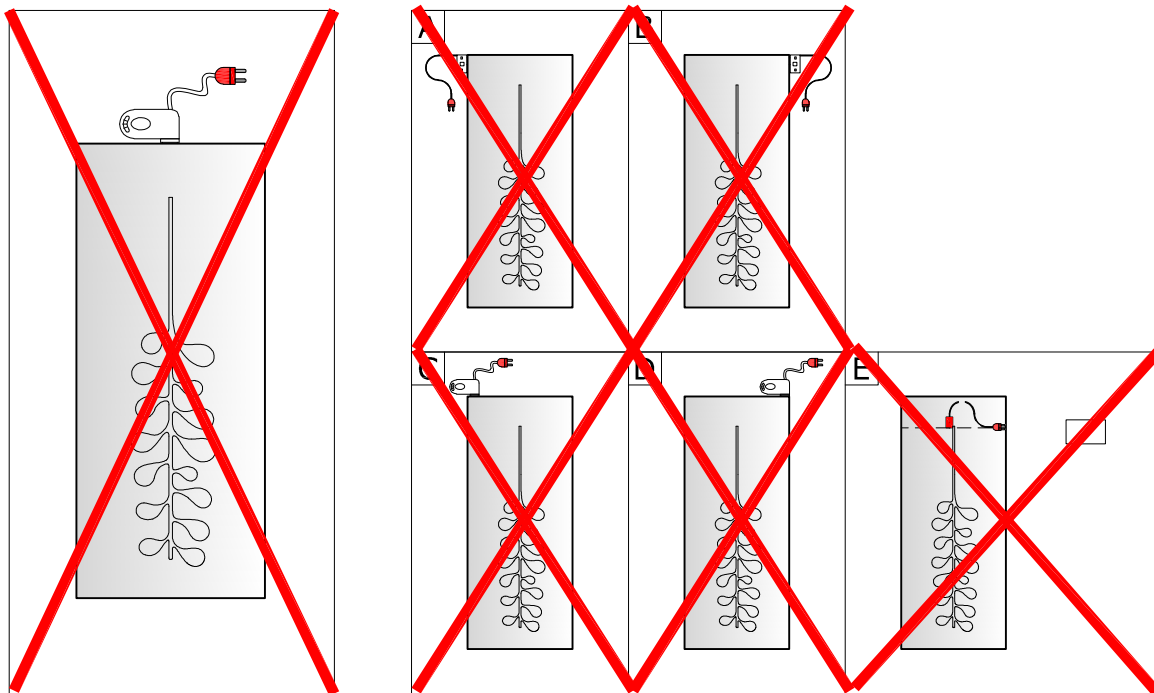
ELECTRIC CONFIGURATIONS

- Cable length about 1.2 mt
- Analogic or digital thermostat available as an option
- Freezing protection up to $T = -15^{\circ}$, available protection up to $T = -38^{\circ}$ upon request

WARNING: some configurations may not be available depending on the size

NOTE FOR INSTALLER : The installation must ensure that the power cord is not directly in contact with the radiator

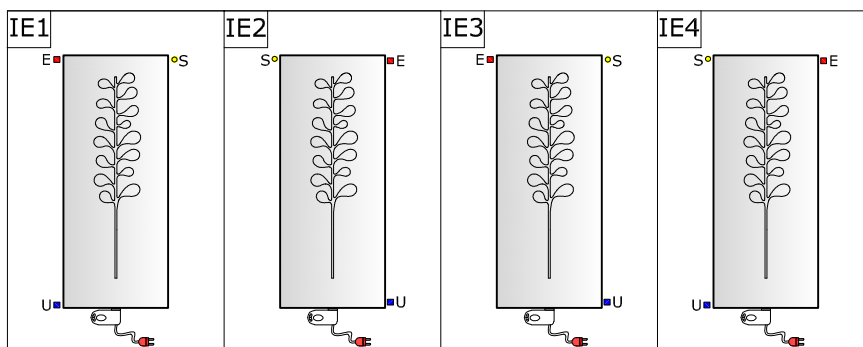
PROHIBITED CONFIGURATIONS



WARNING:

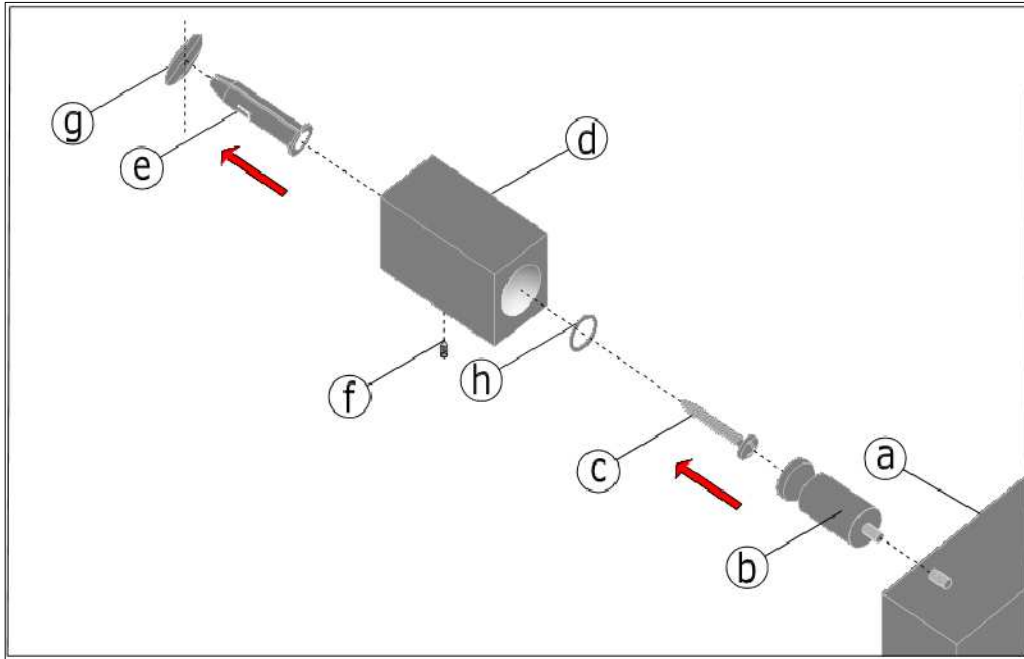
- The configuration barred are PROHIBITED and therefore K8 will not accept any liability for their use

DUAL FUEL POSSIBLE CONFIGURATIONS



Dual Fuel version are only available with standard or "C" water connections

BRACKETS MOUNTING INSTRUCTIONS



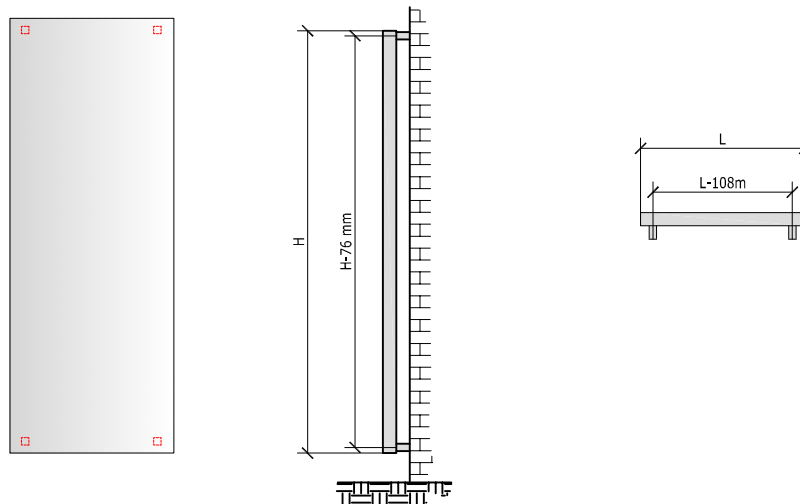
COMPONENTS

- | | |
|-------------|---------------------|
| a) Radiator | e) Wall plugs |
| b) Linchpin | f) Grub screw |
| c) Screw | g) Hole in the wall |
| d) Bracket | h) washer |

INSTRUCTIONS

- 1) Screw the linchpin (b) onto the back of the radiator (a)
- 2) Putt the wall plugs (e) in the wall hole (g)
- 3) Fasten the bracket (d) to the wall with the screw (c) and the washer (h)
- 4) Mount the radiator so the linchpins go into the brackets
- 5) Thighten the grub screw (f)

WALL BRACKET POSITION



ACCESSORIES SIZE

"Camelia" accessory			
Height [mm]	Width [mm]	Camelia Size	
2.200	480	Large	
	640		
2.000	480		
	640		
1.800	320		Medium
	480		
	640		
1.600	320		
	480		
	640		
1.400	320	Small	
	480		
	640		
1.200	320		
	480		
	640		

"Salice" accessory		
Height [mm]	Width [mm]	Salice Size
2.200	480	Large
	640	
2.000	480	
	640	
1.800	320	Medium
	480	
	640	
	640	
1.600	320	
	480	
	640	
1.400	320	
	480	
	640	
	640	
1.200	320	
	480	
	640	

"Ribes" accessory		
Height [mm]	Width [mm]	Ribes Size
2.200	400	Piccolo
2.000		
1.800		
1.600		
1.400		
1.200		
2.200	480 e 560	Grande
2.000		
1.800		
1.600		
1.400		
1.200		