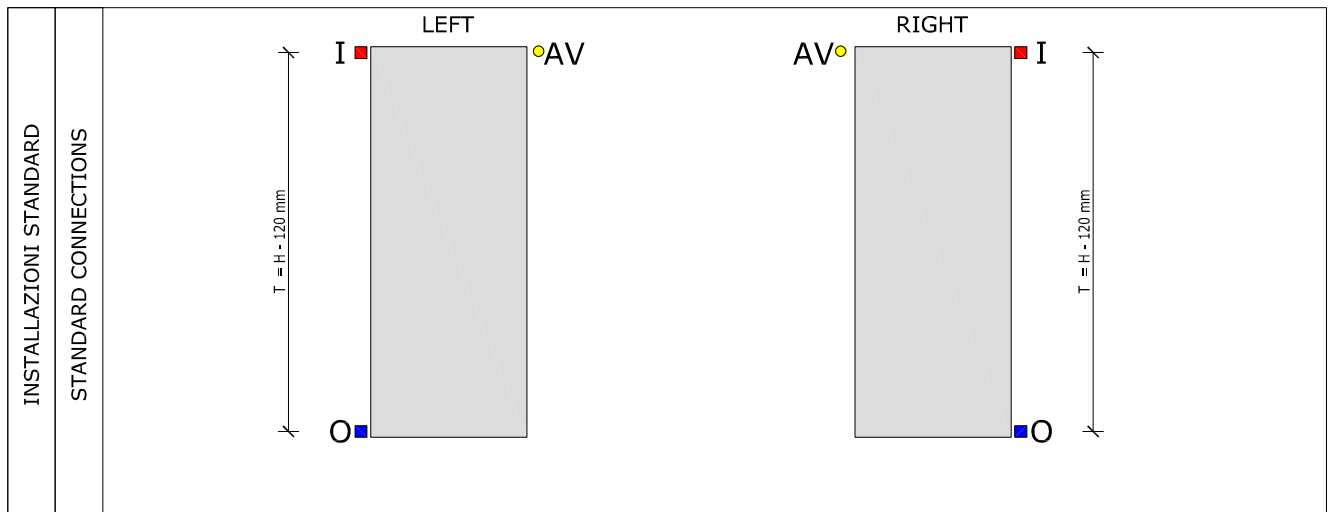


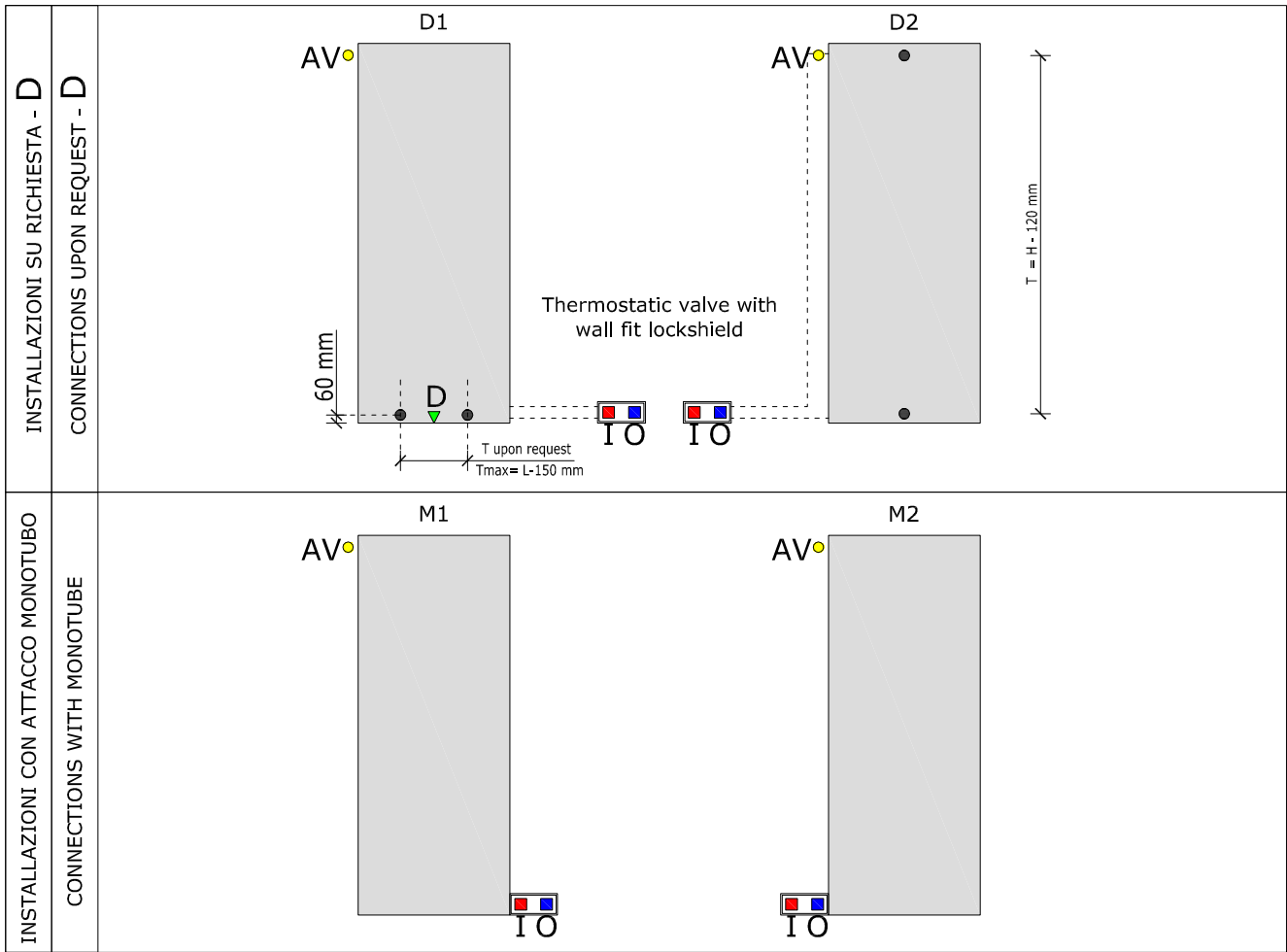
H	Altezza Height Hauter Altura	W	Larghezza Width Largeur Anchura	T	Interasse Tap to tap distance Entraxe Inter-espacio	Litri Liters Litres Litros	Resa Output Rendimento Rendimiento	
							$\Delta T 30^\circ C$	$\Delta T 50^\circ C$
	[mm]		[mm]		[mm]	[Lt]	[W]	[W]
	400		1760		280	3,7	478	937
	960		960		840	3,5	656	1.286
1.800	400		400		1.680	2,1	466	914
	480		480			2,6	583	1.144
	560		560			3,2	700	1.372
2.000	400		400		1.880	2,3	520	1.019
	480		480			2,9	650	1.274
	560		560			3,5	778	1.526

AVAILABLE CONNECTIONS

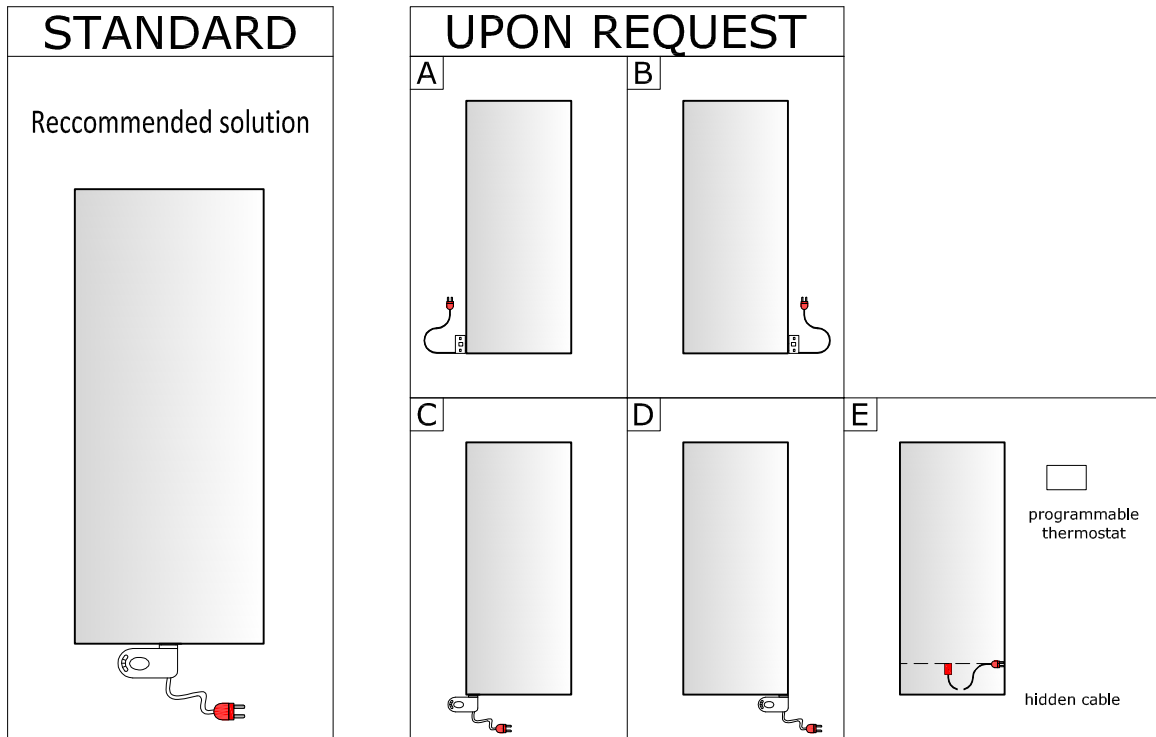
- I =entrata / in
- O =uscita / out
- ▲ D =diaframma / Diaphragm
- I =interasse / interspace
- AV =Sfiato / air vent



<p>INSTALLAZIONI SU RICHIESTA - A CONNECTIONS UPON REQUEST - A</p>	
<p>INSTALLAZIONI SU RICHIESTA - B CONNECTIONS UPON REQUEST - B</p>	
<p>INSTALLAZIONI SU RICHIESTA - C CONNECTIONS UPON REQUEST - C</p>	



ELECTRIC CONFIGURATIONS



Electric radiators need a programmable thermostat
according to "EcoDesign" european directive

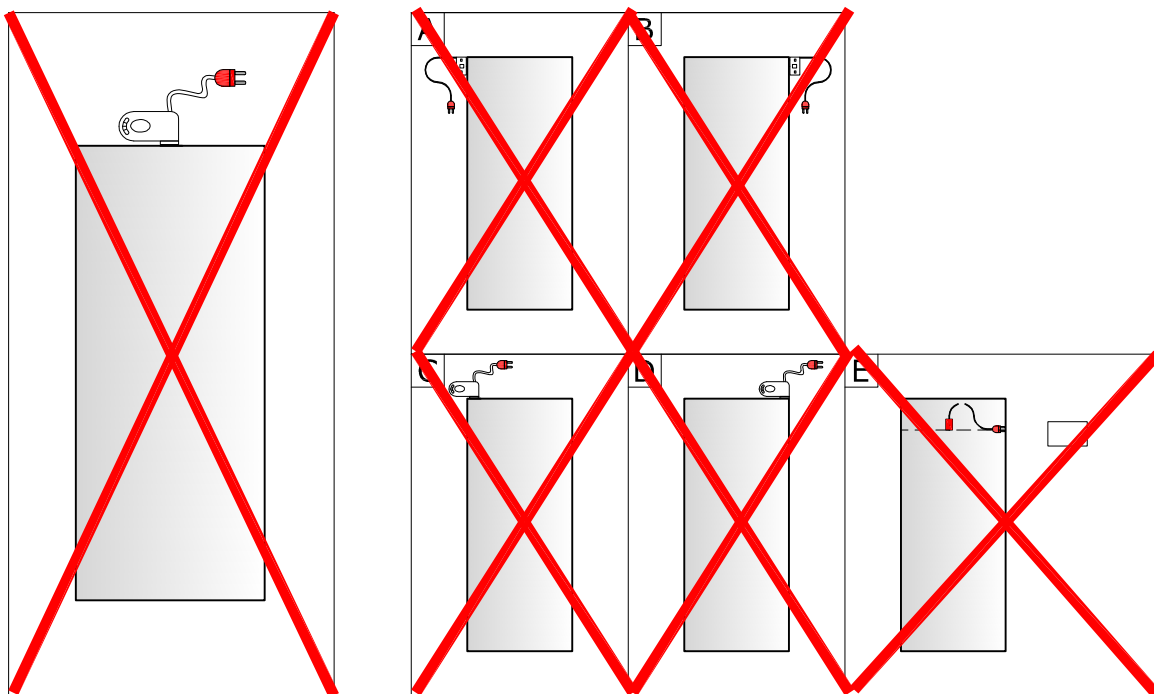
ELECTRIC CONFIGURATIONS

- Cable length about 1.2 mt
- Analogic or digital thermostat available as an option
- Freezing protection up to $T = -15^{\circ}$, available protection up to $T = -38^{\circ}$ upon request

WARNING: some configurations may not be available depending on the size

NOTE FOR INSTALLER : The installation must ensure that the power cord is not directly in contact with the radiator

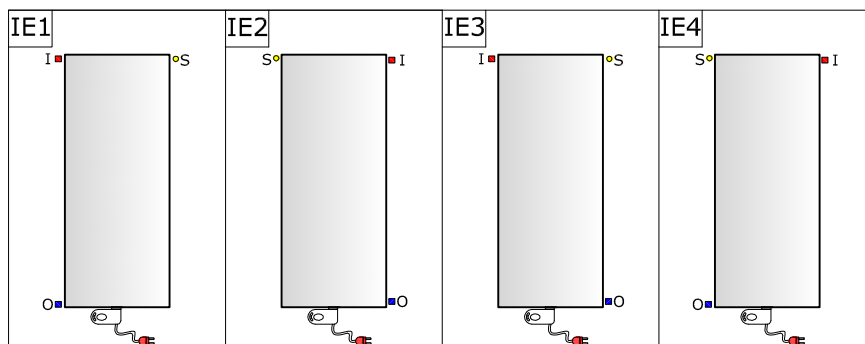
PROHIBITED CONFIGURATIONS



WARNING:

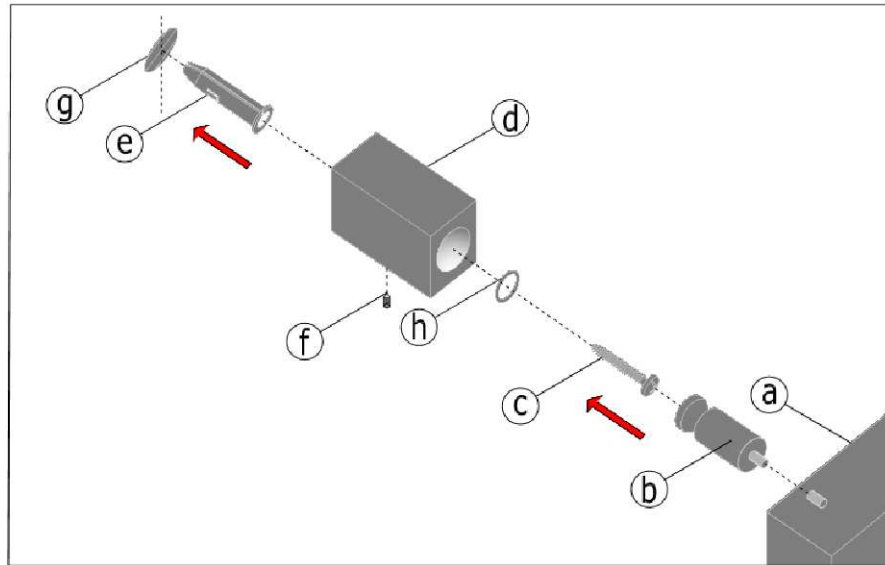
- The configurations barred are PROHIBITED and therefore K8 will not accept any liability for their use

DUAL FUEL POSSIBLE CONFIGURATIONS



Dual Fuel version are only available with standard or "C" water connections

BRACKETS MOUNTING INSTRUCTIONS



COMPONENTS

- | | |
|-------------|---------------------|
| a) Radiator | e) Nog |
| b) Linchpin | f) Head-less screw |
| c) Screw | g) Hole in the wall |
| d) Bracket | h) washer |

INSTRUCTIONS

- 1) Screw the linchpin (b) onto the black of the radiator (a)
- 2) Putt the Nog (e) in the wall hole (g)
- 3) Fasten the bracket (d) to the wall with the screw (c) and the washer (h)
- 4) Mount the radiator so the linchpins go into the brackets
- 5) Thighten the head-less screw (f)

WALL BRACKET POSITION

