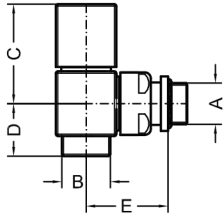




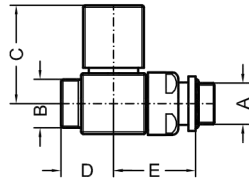
08.

V1661



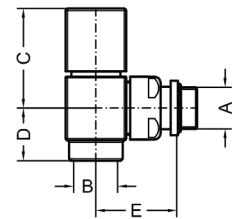
D	A	B	C	E
26	3/8"	24-19	49	40
26	1/2"	24-19	49	40

V1665



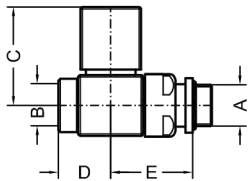
D	A	B	C	E
26	3/8"	24-19	49	40
26	1/2"	24-19	49	40

V1663



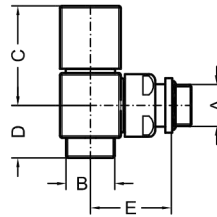
D	A	B	C	E
26	3/8"	24-19	49	40
26	1/2"	24-19	49	40

V1667



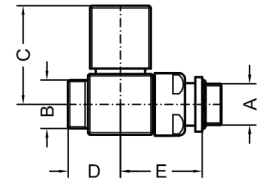
D	A	B	C	E
26	3/8"	24-19	49	40
26	1/2"	24-19	49	40

V1662



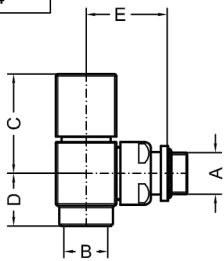
D	A	B	C	E
26	3/8"	24-19	49	40
26	1/2"	24-19	49	40

V1666



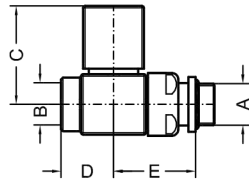
D	A	B	C	E
26	3/8"	24-19	49	40
26	1/2"	24-19	49	40

V1664



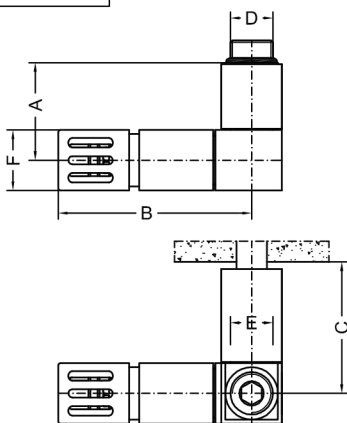
D	A	B	C	E
26	3/8"	24-19	49	40
26	1/2"	24-19	49	40

V1668



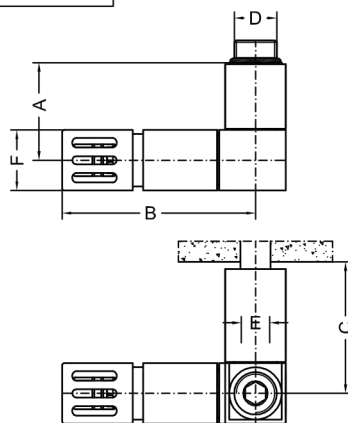
D	A	B	C	E
26	3/8"	24-19	49	40
26	1/2"	24-19	49	40

V541T



D	A	B	C	E	F
1/2"	48	100	65	1/2"	30

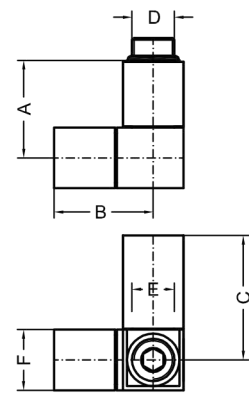
V543T



D	A	B	C	E	F
1/2"	48	100	65	1/2"	30

V541

V542



A	B	C	D	E	F
48	49	61.5	1/2"	1/2"	30